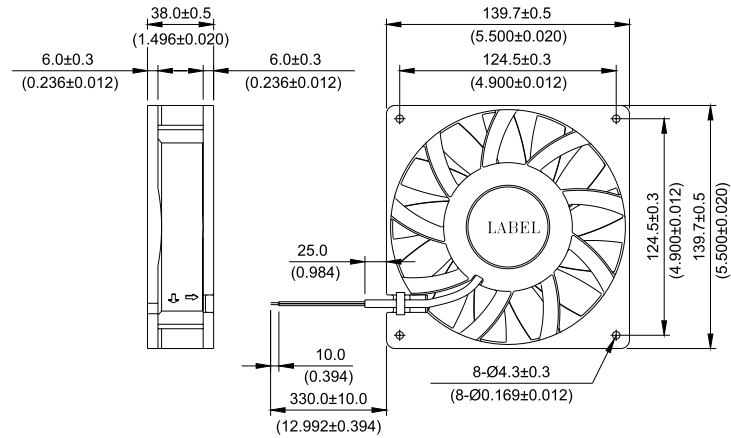


New

FHB 140 x 140 x 38 MM SERIES

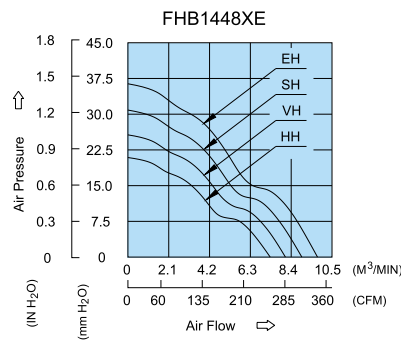
DIMENSIONS DRAWING



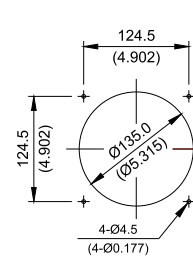
UNIT: $\frac{\text{mm}}{(\text{INCH})}$

P & Q CURVE (AT RATED VOLTAGE)

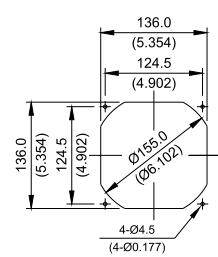
MOUNTING PANEL CUTOUT



OUTLET SIDE



INLET SIDE



UNIT: $\frac{\text{mm}}{(\text{INCH})}$

- * Bearing Type
Ball Bearings
- * Material
Impeller : Plastic (UL 94V-0)
- * Frame : Die-Cast Aluminum
- * Lead Wires :
UL 1430 AWG#22 OR Equivalent
Red Wire Positive (+)
- * Black Wire Negative (-)
Weight : 650g (22.93 oz)

MODEL		Rated Voltage	Operating Voltage Range	Rated Current	Rated Input Power	Speed	Maximum Air Flow		Maximum Air Pressure		Noise
PART NO.	FUNCTION	VDC	VDC	Amp	Watt	R.P.M.	m ³ /min	CFM	mmH ₂ O	IN H ₂ O	dB-A
FHB1448HHE	-R00 / -F00	48	32.0 to 80.0	0.66	31.68	3800	7.358	259.85	20.88	0.822	63.5
FHB1448VHE	-R00 / -F00	48	32.0 to 80.0	0.83	39.84	4200	8.162	288.24	25.64	1.009	67.5
FHB1448SHE	-R00 / -F00	48	32.0 to 80.0	1.09	52.32	4600	8.972	316.84	30.67	1.208	69.5
FHB1448EHE	-R00 / -F00	48	32.0 to 80.0	1.36	65.28	5000	9.807	346.34	36.43	1.434	71.0

- * Function type is optional.
- * The max. air flow and the speed are measured in free air ; max. air pressure is measured at zero air flow.
- * Noise is measured in anechoic chamber in free air, one meter from intake side.
- * All readings are typical values at rated voltage.
- * Specifications are subject to change without notice.